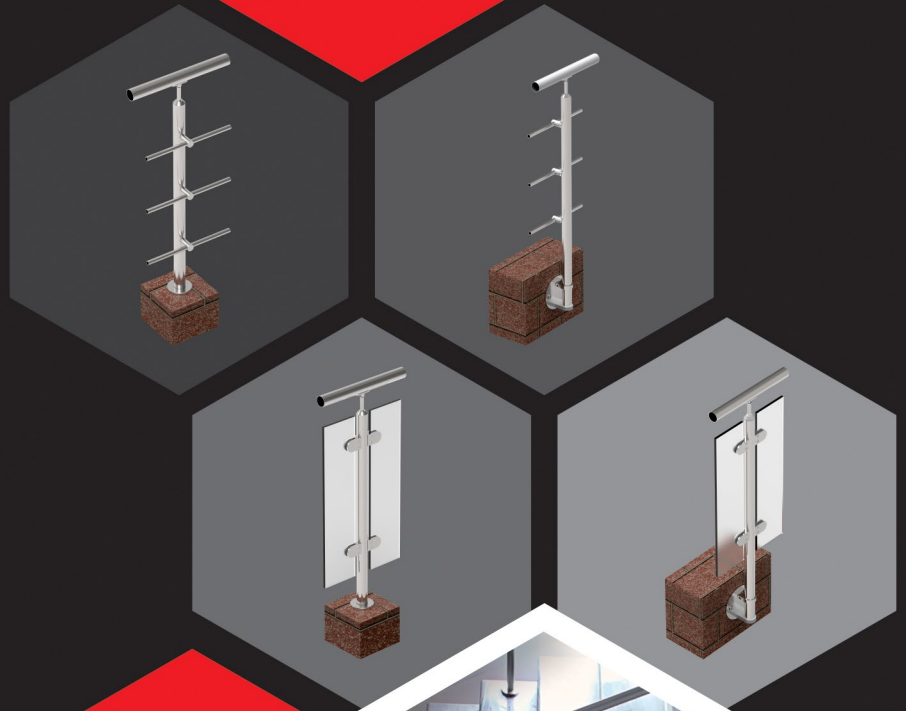


Corrosion Resistant High Grade
AISI 316 Stainless Steel
Handrail & Baluster Systems



KICH[®]
STEEL... FOR LIFE

**MODULAR HANDRAIL &
BALUSTER SYSTEMS
CATALOGUE**



Company Profile



SHRI CHIMANBHAI HAPANI
FOUNDER



Corporate House



Production Unit

Kich Architectural Products Pvt. Ltd. is Rajkot based India's leading manufacturer in the premium segment of Architectural Hardware, Bathroom Accessories and Handrails & Baluster Systems. With a vision to deliver superior quality and long lasting durability in architectural products category, Kich was established as an export oriented unit in the year 1992. Although having a very humble beginning, Kich grew at a very fast pace due to unmatched quality and unique craftsmanship of its products.

Since inception, Kich has always fulfilled global quality parameters. Kich architectural products are the epitome of enduring strength, stunning aesthetics, unique designs and impeccable functionality. With a vast network of more than 56+ product galleries, 2 application centers, 500+ dealers and a team of more than 50 marketing executives across the country, Kich has always been able to deliver uncompromised pre and post sales service support to its customers. Besides being well-rooted in India, Kich has a vast sales and service network in Europe, Middle East and Africa.

With the splendid guidance of its founder Shri Chimanbhai Hapani and under the dynamic leadership of his three sons Mr. Bharat Hapani (Managing Director), Mr. Nitin Hapani (Director: Manufacturing) and Mr. Dinesh Hapani (Director: Export), Kich has always been able to achieve extraordinary progress with customer delight.

To suit its production objectives, Kich operates from a state-of-the-art manufacturing facility which spreads in 2,00,000 sq. ft. area in Rajkot. Due to an in-house Design Studio, Tool Room, R&D Division and Product Testing Facility, Kich has succeeded in consistency of product performance. Kich also has multi-facility Corporate House spread across 23,000 sq. ft. area which is rewarded with LEED India New Construction (NC) GOLD Rating by Indian Green Building Council (IGBC). This Corporate House empowers Kich to manage its entire pre and post sales service network with a great ease.

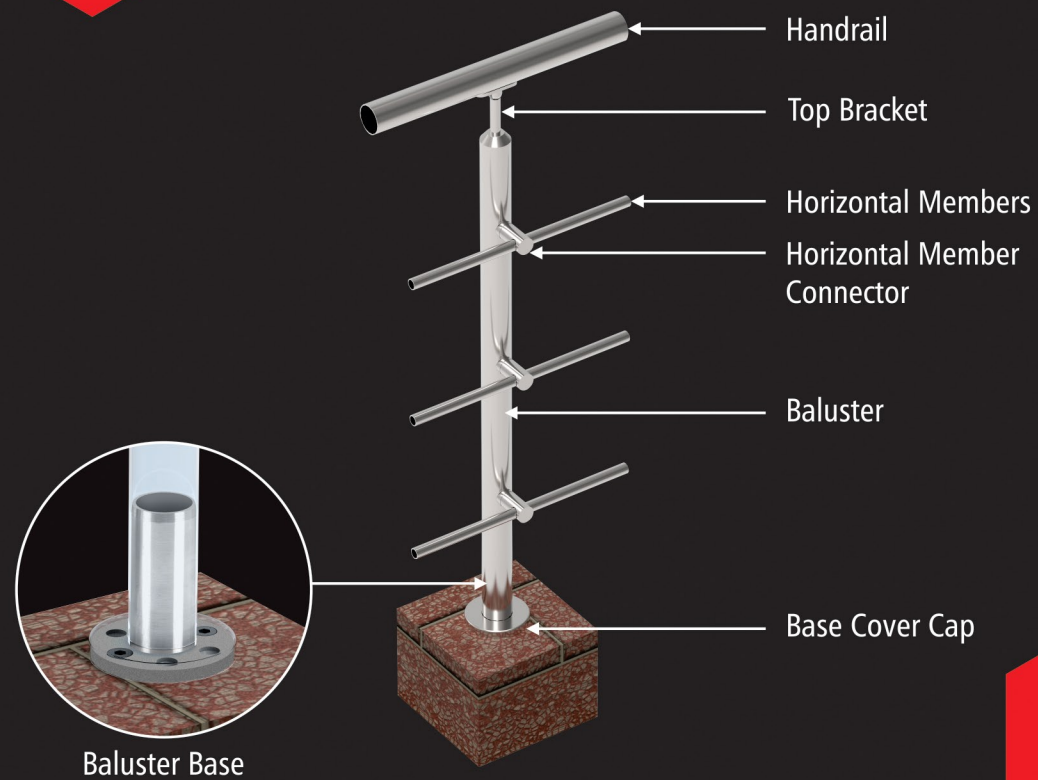
Quality Assurance

Quality Aspects alone determine ultimate fate of any product or brand. At Kich, quality norms under ISO 9001:2008 and international standards for quality management are deployed to give valuable edge to all the products. Kich takes meticulous care at each and every stage of manufacturing. Strict quality control measures are exercised at every stage, from input of raw material to finished products.

Top Mounted Round Baluster System with Horizontal member



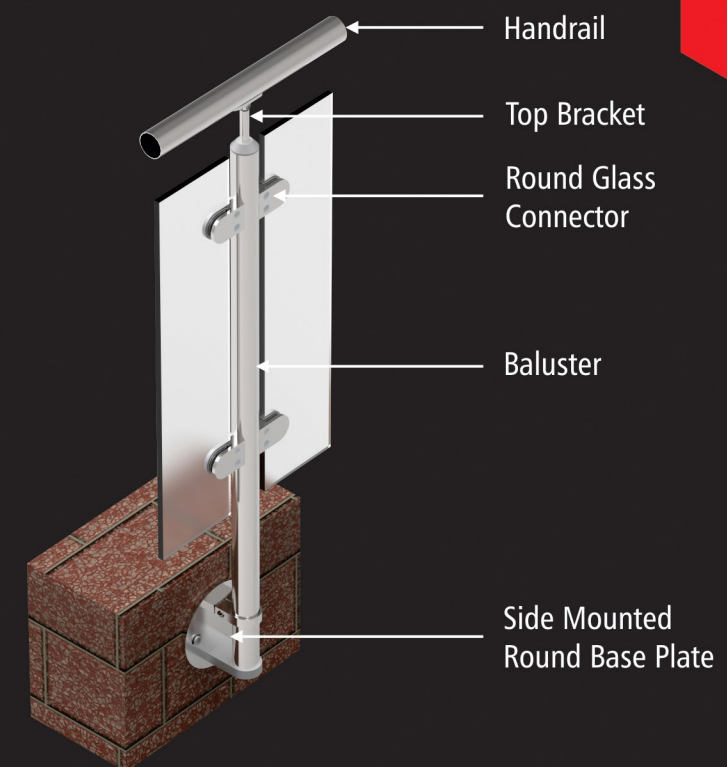
Side Mounted Round Baluster System with Horizontal member



Key Features:

- Ready to supply parts for Fastest Execution of Railing System.
- Better Quality of Modular System compare to Fabricated system.
- Enduring Strength ensures utmost safety.
- Weld Free Modular System - Best alternative of fabricated Railing System.
- Flexible & Quick assembling of Railing Systems.
- Refreshing Modern Contemporary look with Economical cost.

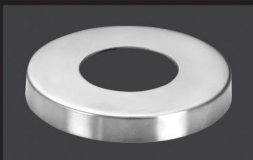
Top Mounted Round Baluster System with Glass



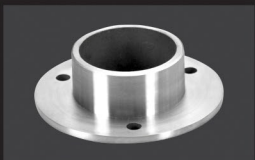
Side Mounted Round Baluster System with Glass

MODULAR RAILING
SYSTEM PARTS

HANDRAIL



MWCC-42.4
Wall Cover Cap



MWFHR-42.4
Wall Flange for Handrail
(With Accessories)



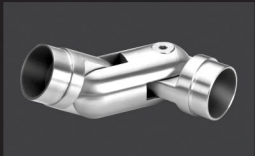
MPCHR-42.4
Two Pipe Connector



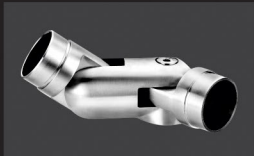
M90HRB-42.4
90 Degree Bend for Handrail



M360HRB-42.4
360 Degree Adjustable Bend for Handrail



MBHR2-42.4
2 way Adjustable Bend for Handrail



MBHR3-42.4
3 way Adjustable bend for Handrail



MBHRS-42.4
Smooth Bend for Handrail



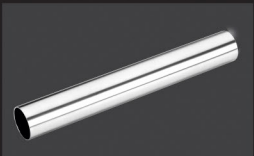
MWB-1-42.4
Wall Mounted Bracket
(With Accessories)



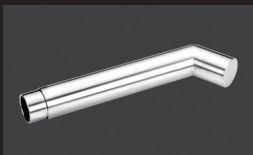
MHL135-42.4
Handrail Locator Part-135 Degree
(With Accessories)



MHL90-42.4
90 degree Handrail locator
(With Accessories)



MRP-42.4
Round Pipe for Handrail & Baluster



MSB-42.4
Starting Pipe for Handrail

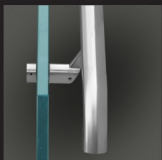


MECHR-42.4
End cap for Handrail

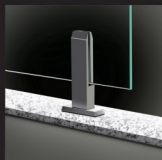
BALUSTER



DS1S
S.S. Side Bracket to Hold Glass



DS1U
S.S. Top Bracket to Hold
Continue Handrail



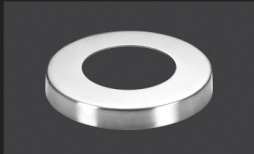
DT2
Bottom Bracket to Hold Glass



MRGC-14
Round Glass Connector
(With Accessories)



MSGC-14
Square Glass Connector
(With Accessories)



MBCC-14
Base Cover Cap



MDGC-14
Double Glass Connector
(With Accessories)



MBB-14
Baluster Base (With Accessories)



MSBP-14
Side Mounted Round Base Plate
(With Accessories)



MHMC-14
Horizontal Member Connector
(With Accessories)



MTB-1-14
Top Bracket

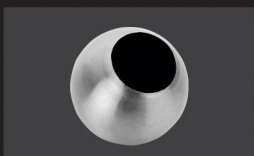
HORIZONTAL
MEMBERS



MFBHM-16
Flexible Bend for Horizontal Member



MECHM-16
End cap for Horizontal Member



MRECHM-16
Round End cap for Horizontal Member

OUR ESTEEMED CLIENTS



Marketing in Gujarat, M.P., U.P., Rajasthan & North India by :

Kich Architectural Products Pvt. Ltd.

Gondal Road, NH 8B, Vavdi, Rajkot (Gujarat), India.

Tel : +91-74900 39316/17/18, E-mail : railing@kichindia.com

Marketing in Maharashtra, Goa, South & East India by :

Neki Projects & Infrastructure Pvt. Ltd.

111, A-Wing, Boomerang, Near Chandivali Studio, Chandivali Farm Road, Andheri (East), Mumbai - 400 072. Tel : +91-22-28576991/92,

Helpline : +91 98335 53636, E-mail : info@nekiindia.com

Scan to Get KICH mobile app
or download from



Available on the
Google play

Available on the
App Store

www.kichindia.com | Helpline : +91 93757 13638